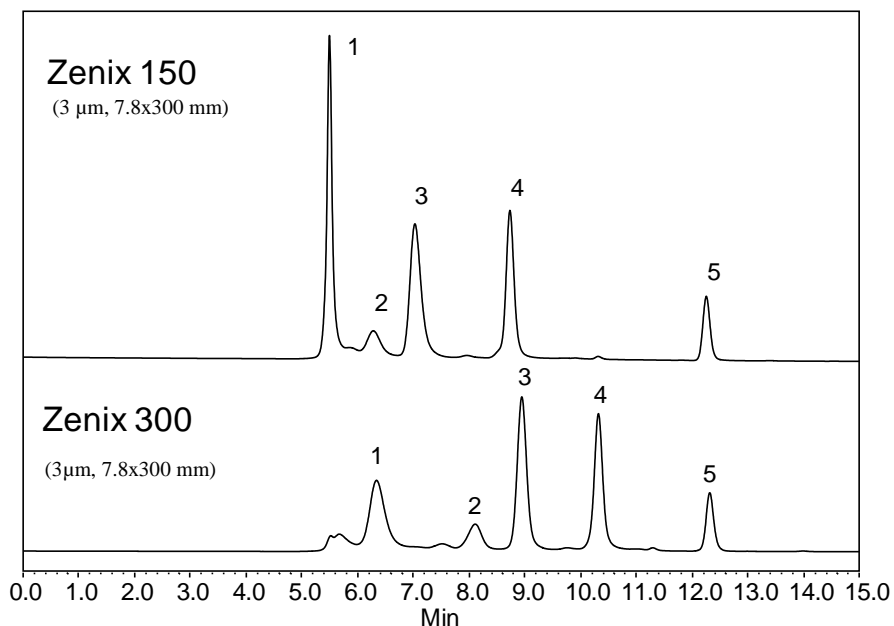
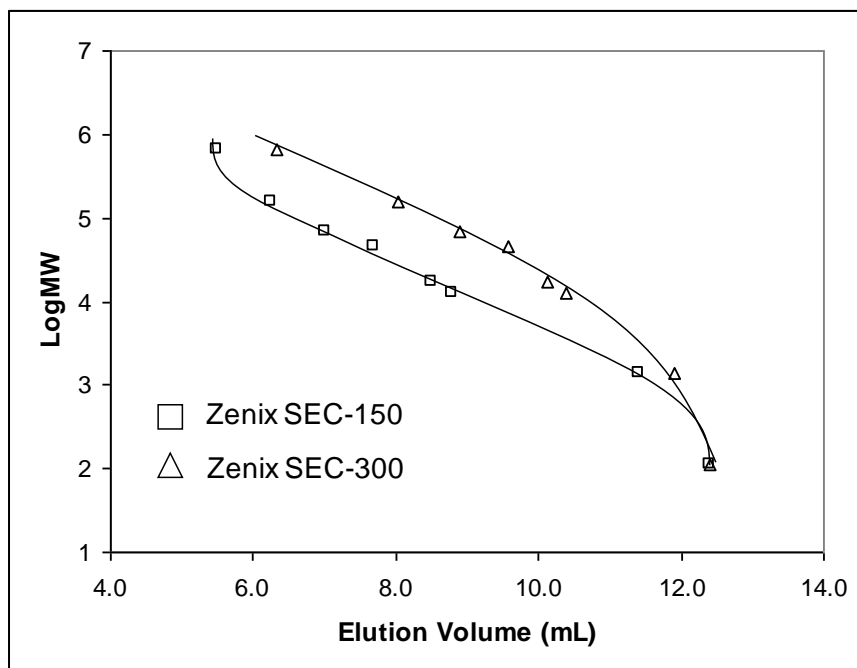




## High SEC Efficiency for Protein Separation and MW Calibration Curve – Zenix™ (7.8 x 300 mm)



Mobile Phase: 150 mM phosphate buffer, pH 7  
Flow Rate: 1.0 mL/min  
Detection: UV 214 nm  
Injection Volume: 10 μL  
Samples: 1) Thyroglobulin (1.0 mg/mL), 670 kD; 2) BSA dimer, 132 kD; 3) BSA (1.0 mg/mL), 66 kD; 4) Ribonuclease A (1.0 mg/mL), 13.7 kD, and 5) Uracil (2.5 μg/mL), 120D



Column: Zenix™ (3 μm, 7.8 x 300 mm)  
Mobile Phase: 150 mM phosphate buffer, pH 7  
Flow Rate: 1.0 mL/min  
Detection: UV 214 nm  
Injection Volume: 10 μL  
Samples: 1) Thyroglobulin 670 kD  
2) γ-Globulin 158kD  
3) BSA 66kD  
4) Ovalbumin 44 kD  
5) Myoglobin 17.6 kD  
6) Ribonuclease 13.7 kD  
7) B12 1.35 kD  
8) Uracil 120D

Keywords: Size exclusion, Zenix, proteins, pore size, calibration curve