



Separation of Pullulan on SRT[®]-300

Column: SRT[®] 300 (5 μ m, 300 Å , 7.8 x 300 mm)
Mobile Phase: 150 mM phosphate Buffer, pH 7.0
Flow rate: 1.0 mL/min
Detection: RI (30 $^{\circ}$ C)
Injection volume: 20 μ L

Sample: 10 mg/mL in mobile phase
0.342 kD, 1.32 kD, 6 kD, 10 kD, 21.7 kD,
48.8 kD 113 kD, 210 kD, 366 kD and 805 kD
Column temperature: 25 $^{\circ}$ C
Pressures: 600 psi

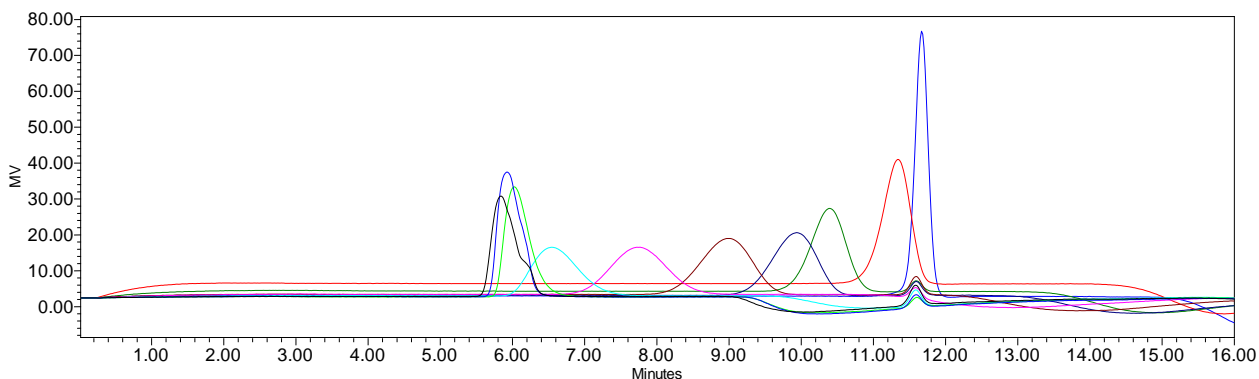


Figure 1. Chromatogram overlays for Pullulan standards on SRT[®]-300, 5 μ m, 7.8 x 300 mm.

NO	Molecular weight	Log MW	Elution volume(mL)
1	342	2.534026	11.67
2	1320	3.120574	11.341
3	6000	3.778151	10.394
4	10000	4	9.936
5	21700	4.33646	9.003
6	48800	4.68842	7.752
7	113000	5.053078	6.546
8	210000	5.322219	6.025
9	366000	5.563481	5.925
10	805000	5.905796	5.839

Table 1. Pullulan molecular weight and retention time on SRT[®] 300, 5 μ m, 7.8 x 300 mm.

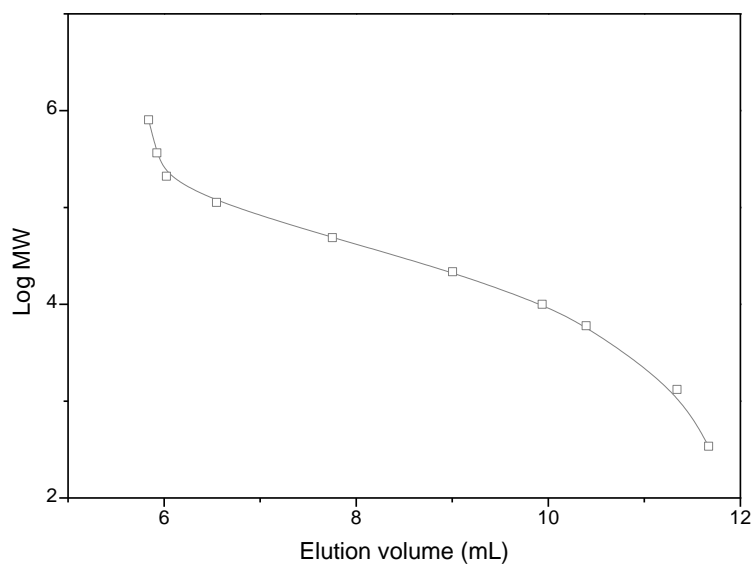


Figure 3. Calibration curve of Pullulan molecular weight vs. Elution volume on SRT[®] 300.

Keywords : size exclusion, SRT, Pullulan, SRT 300, polysaccharide