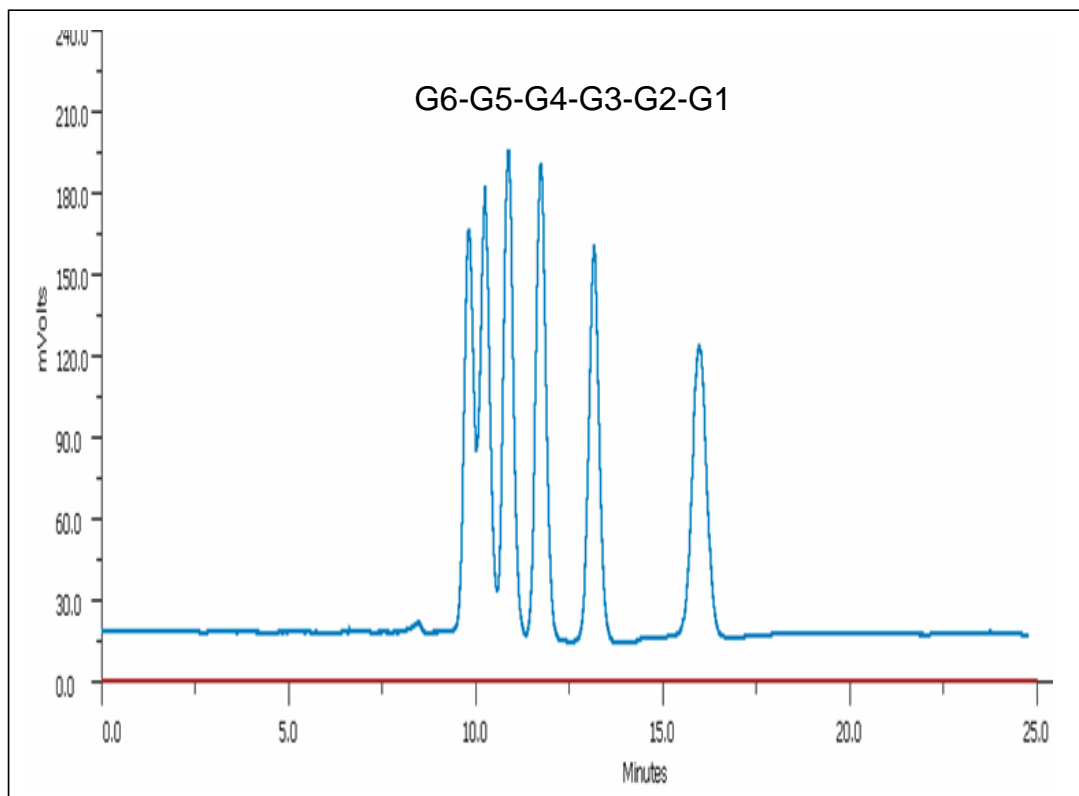




**Separation of Monosaccharide and its oligomers on  
Carbomix<sup>®</sup>-Ca (5  $\mu$ m, 8%, 4.6x300 mm)**



Column: Carbomix<sup>®</sup> Ca-NP5 (5  $\mu$ m, 8% cross-linkage, 4.6x300 mm)  
Mobile Phase: water  
Flow Rate: 0.15 mL/min  
Temperature: 85 °C  
Detection: ELSD  
Injection Volume: 10  $\mu$ L  
Samples: glucose (G1) and its oligomers (G2-G6)  
(Courtesy of Miyako Kawakatsu, M&S Instruments, Inc.)

Keywords: Carbohydrate, Carbomix, calcium form, sugar, glucose, monosaccharide, oligosaccharide